

WHO IS REPSOL?



In March 2024, Repsol acquired ConnectGen's portfolio of wind, solar, and energy storage projects, including Lava Run Wind and Lava Run Solar. Repsol is a global multi-energy company committed to reaching net zero emissions by 2050.

Today, Repsol Renewables North America has 750+ MW of operational solar energy projects across New Mexico and Texas, with a stated target of having 7,800 MW of renewable energy projects in operation in the United States by 2030. The Lava Run Wind and Lava Run Solar projects are a strategic part of this plan.

Lava Run
Wind & Solar Projects

WHY LAVA RUN?



In recent years, energy production in the western U.S. has been shifting as power providers adapt to changing market conditions, technology, and policy. In Apache County, Tucson Electric Power Company (TEP) began seasonal operations at the Springerville Generating Station in 2023, with plans to retire Unit 1 in 2027 and Unit 2 in 2032.

As Arizona's energy needs continue to grow, local utilities like TEP are looking for renewable energy projects such as Lava Run Wind and Lava Run Solar to help meet future demand reliably and sustainably.

These changes in the energy landscape will affect the local economy—particularly in terms of jobs and tax revenues. **The Lava Run Projects offer an opportunity to support Apache County's economic future by creating construction and full-time operations jobs and contributing an estimated \$74.4 million in property tax revenues over 35 years, along with other community investments.**

For decades, Apache County has played a key role in powering Arizona. The Lava Run Wind and Lava Run Solar Projects represent the next chapter in that legacy—providing clean, homegrown energy for future generations.

Lava Run
Wind & Solar Projects

INTERCONNECTION PROJECT OVERVIEW

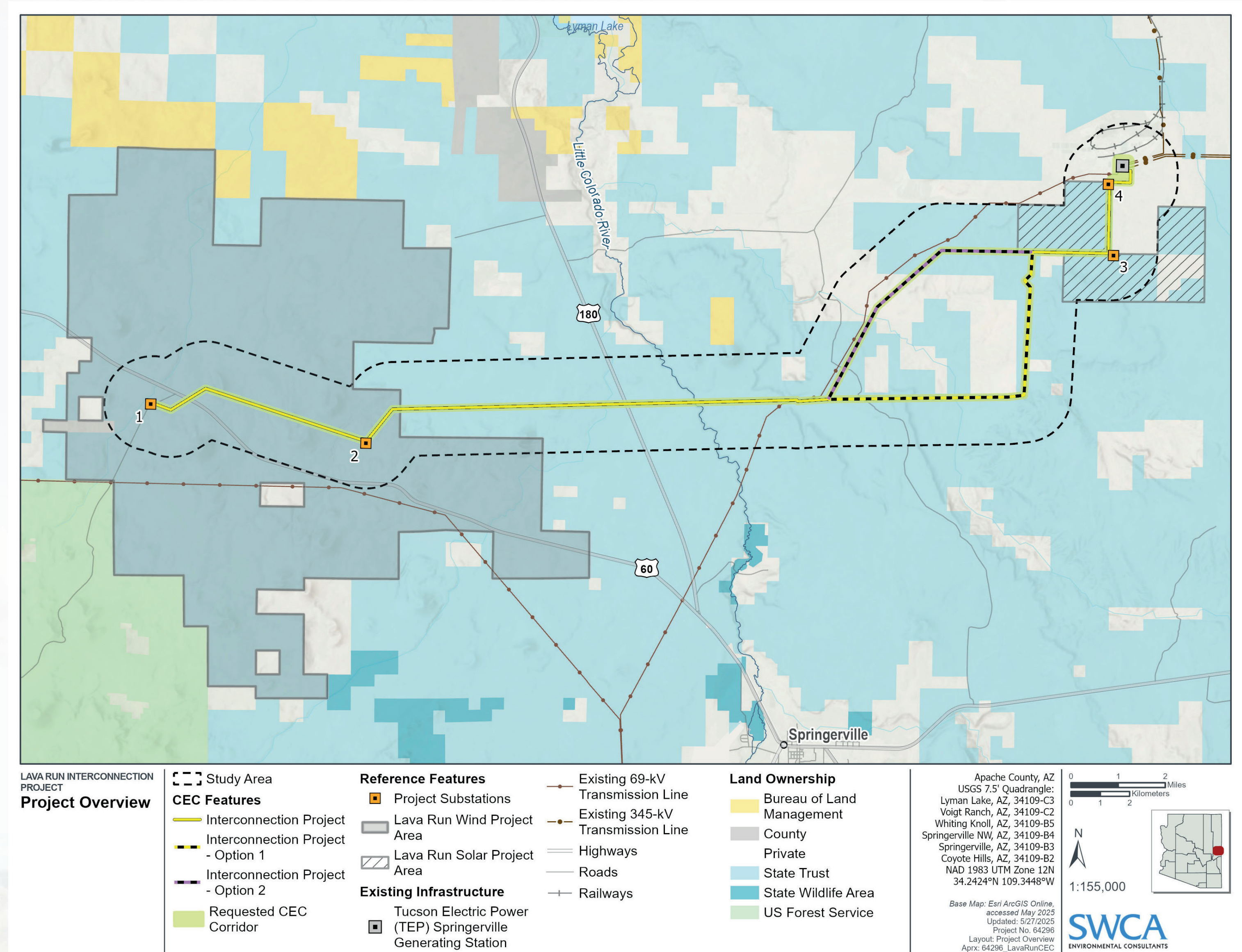
CG Apache County Wind LLC and CG Apache County Solar LLC – affiliates of Repsol Renewables North America – propose to construct an up to 29-mile-long, 345-kilovolt transmission line (Interconnection Project). The Interconnection Project involves two route options, but only one will ultimately be constructed.

The Interconnection Project will connect the Lava Run Wind and Lava Run Solar projects—respectively, a proposed 500-megawatt (MW) wind facility and a proposed 450-MW solar facility with an on-site battery energy storage system—to the regional electrical grid via Tucson Electric Power Company’s existing Springerville 345 kV Substation at the Springerville Generating Station.

The Interconnection Project is anticipated to be built within a 200 foot right-of-way and will involve:

- Overhead transmission structures and conductors
- Access roads.

The Interconnection Project structures are anticipated to be no more than 180 feet high and the lines will be at least 25.7 feet off the ground.



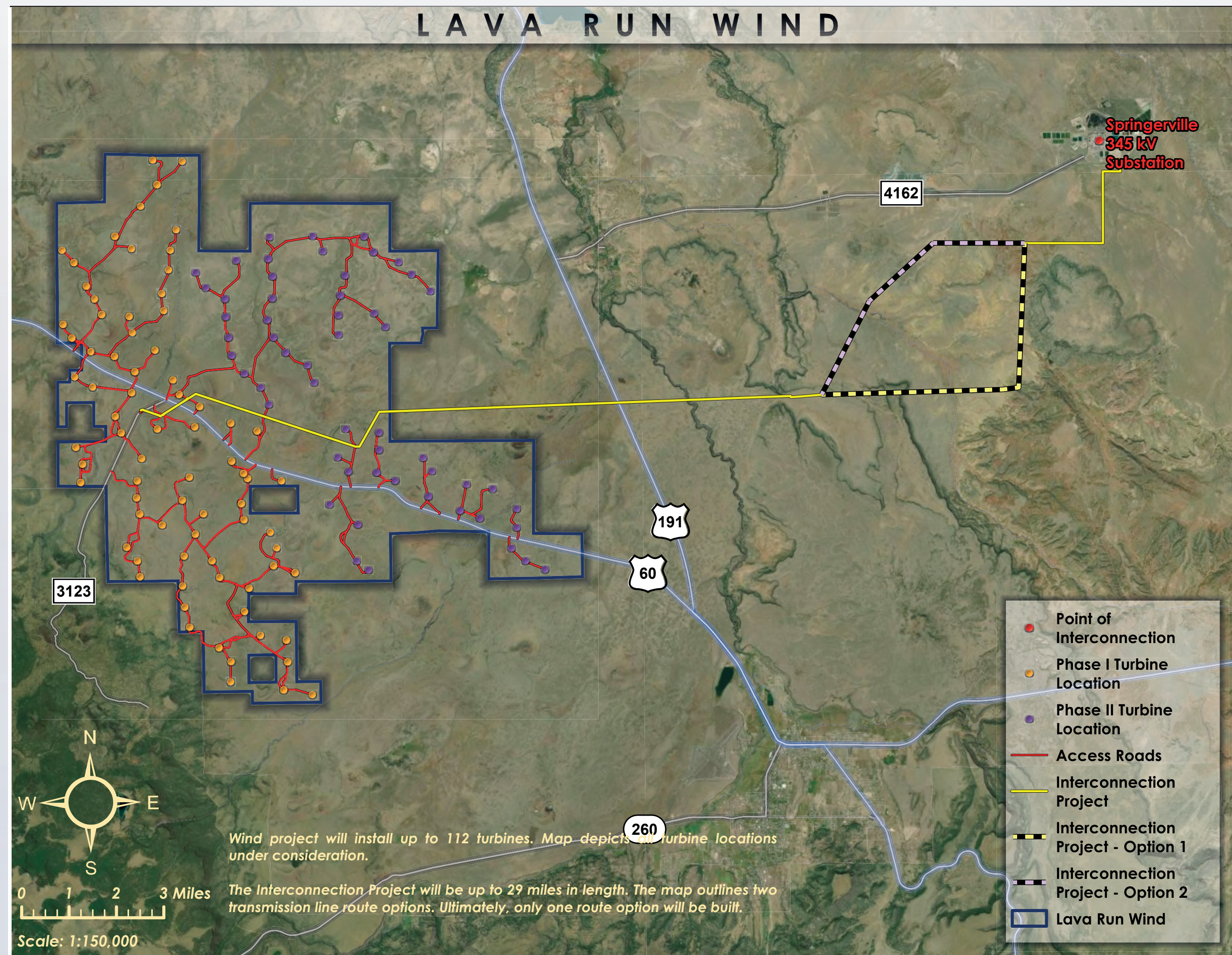
The Interconnection Project is anticipated to begin **construction in early 2027**, with an expected **commercial operation date at the end of 2028**.

Lava Run

Wind & Solar Projects

LAVA RUN

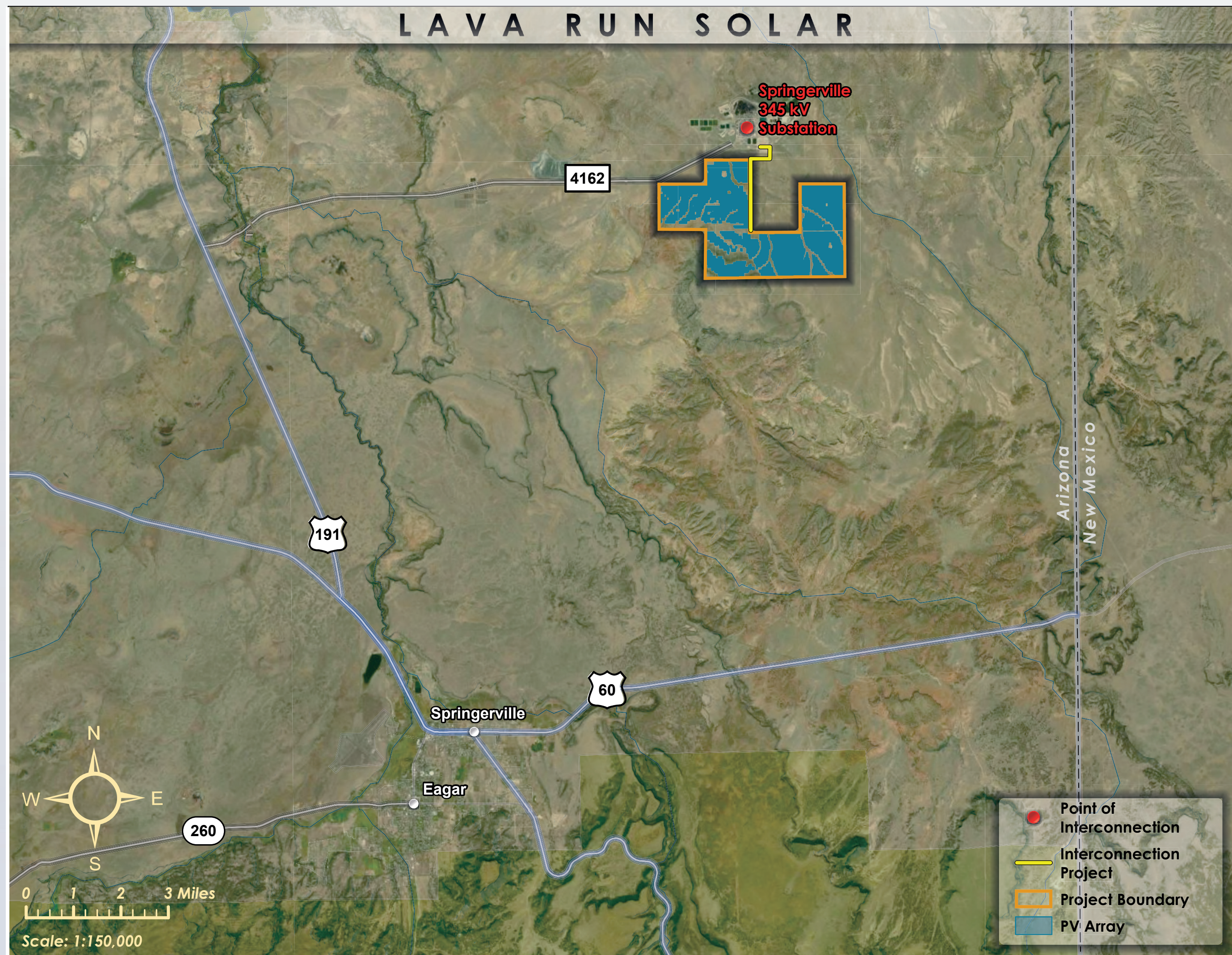
WIND PROJECT OVERVIEW



- 500 MW total across two project phases with the potential to power 90,000+ Arizona homes annually
- Sited primarily on Arizona State Trust Lands, with an infrastructure footprint of approx. 500 acres
- Capital investment of approximately \$1 billion, resulting in significant contributions to the local property tax base and substantial economic benefits to Apache County, which will mitigate some of the losses expected from the closure of Unit 1 at the Springerville Generating Station in 2027
- Wind in this region has a complementary energy generation profile to solar-plus-battery to help deliver around-the-clock electricity
- Compatible with the existing land uses; grazing and recreational activities will continue during wind project operations

Lava Run
Wind & Solar Projects

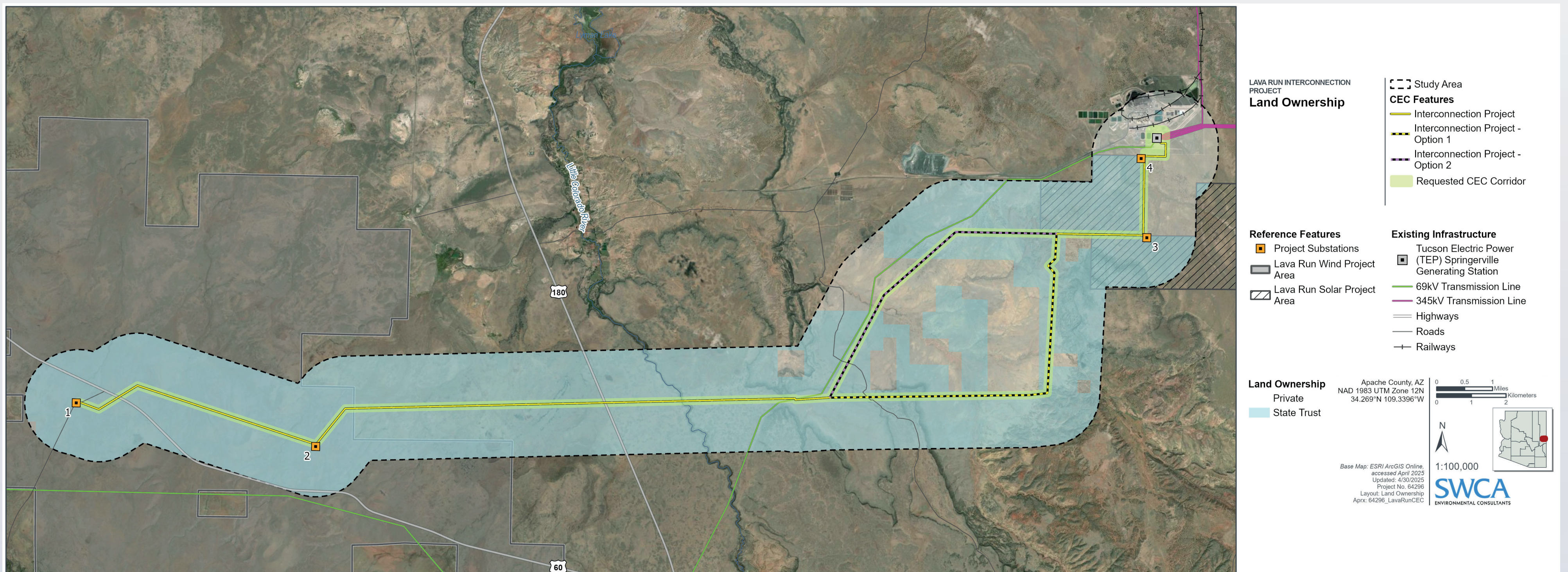
LAVA RUN SOLAR & BATTERY PROJECT OVERVIEW



- 450 MW total across two project phases, with the potential to power 100,000+ Arizona homes annually
- Sited on approx. 3,760 acres of Arizona State Trust Land with the potential to include 440 acres of private lands
- Capital investment of approximately \$1.1 billion, resulting in a significant increase in the local property tax base and substantial economic benefits to Apache County, which will mitigate some of the losses expected from the closure of Unit 1 at the Springerville Generating Station in 2027
- 4-hour lithium-ion batteries help meet electricity demand during the evening hours
- Have been in close coordination with the grazing lessee within the project area

Lava Run
Wind & Solar Projects

PROJECT AREA — INTERCONNECTION PROJECT



The majority of the Interconnection Project will be on Arizona State Trust Lands, with some portions on private land.

**The entire Interconnection Project
is in unincorporated Apache County, Arizona.**

The Interconnection Project will be reviewed by the Arizona Corporation Commission through its Certificate of Environmental Compatibility hearing process.

**The hearing is anticipated to take place
between October 20 – 24, 2025**

Lava Run
Wind & Solar Projects

EXISTING LAND USE

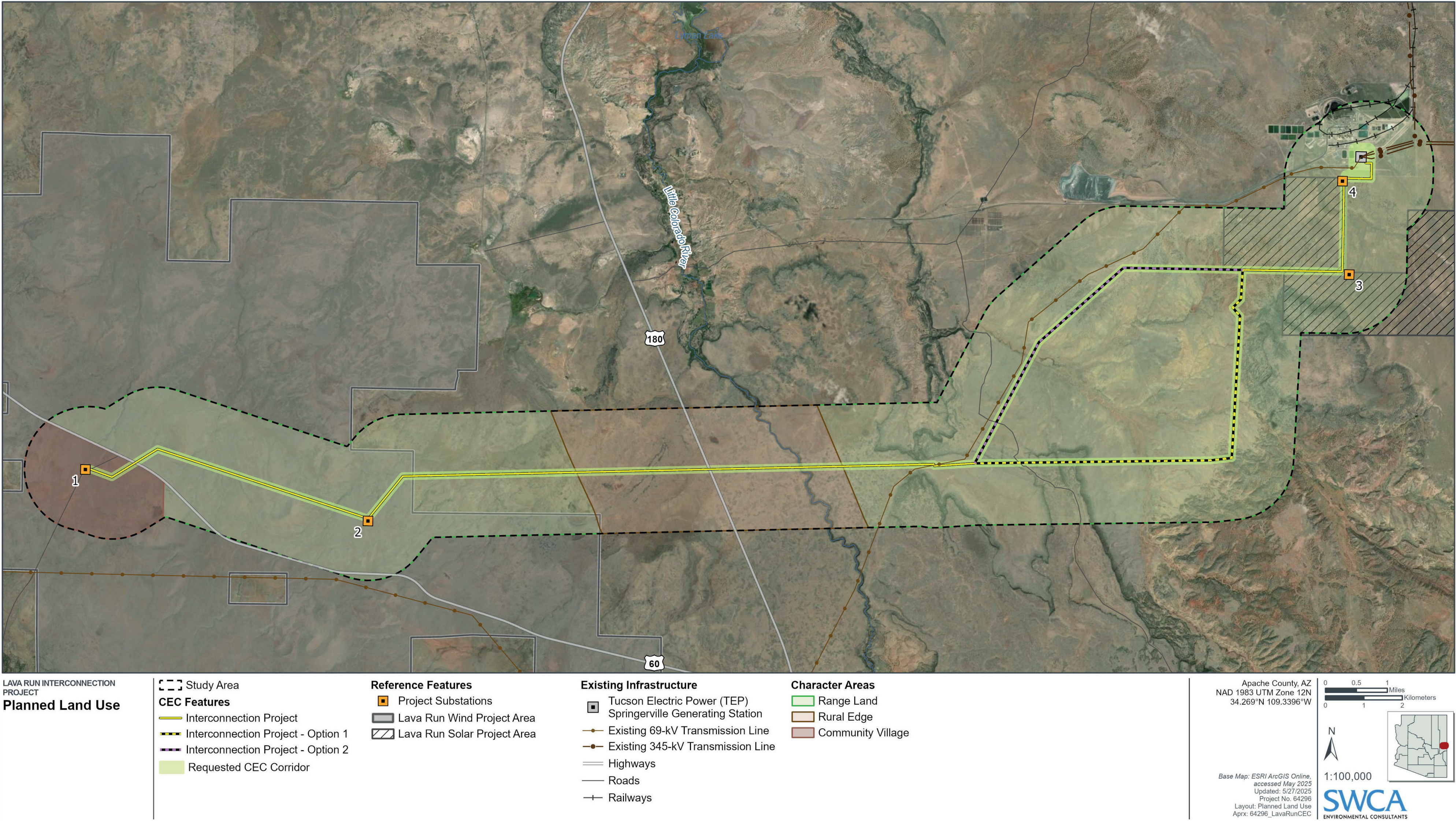
Existing land uses include vacant land, utility, and transportation.

The Interconnection Project has been sited in part by carefully coordinating with existing grazing lessees.

Interconnection Project Option 2 was developed with feedback from grazing lessees. Both options will be included in this permitting process while the Project team continues to evaluate the feasibility of each.

Lava Run
Wind & Solar Projects

APACHE COUNTY COMPREHENSIVE PLAN



Future land use is identified by Apache County. The future land uses include Range Land and Rural Edge.

The purpose of the Range Land Character Area is to allow for traditional agricultural uses, including grazing. Importantly, the Interconnection Project will not interfere with grazing lessees' ability to continue to graze on their property.

The purpose of Rural Edge is to allow for lower density residential development, which would include uses like the Interconnection Project.

Lava Run
Wind & Solar Projects

LAVA RUN INTERCONNECTION PROJECT — CERTIFICATE OF ENVIRONMENTAL COMPATIBILITY (CEC) SCHEDULE

Q2 – SEPTEMBER 2025

Develop CEC Application

WE ARE CURRENTLY HERE!

SEPTEMBER 2025

Submit CEC Application¹

OCTOBER 20 – 24 2025

Arizona Power Plant and Transmission
Line Siting Committee Hearing^{2 3}

DECEMBER 2025 – JANUARY 2026

Arizona Corporation
Commission Open Meeting⁴

FEBRUARY – MARCH 2026

CEC Issued (If approved)⁵

- 1) Check the project website for a copy.
- 2) You will get a similar letter announcing the details of the hearing. We will also circulate newspaper and social media ads, publish a notice on the project website, and have onsite signs installed.
- 3) You can watch the hearings in-person or online, and there is normally a public comment period that is in-person or online. Talk to a representative if you have questions.
- 4) The exact date is not known at this time, as is typical. Please check: <https://edocket.azcc.gov/calendar> after October 2025. These applications are normally heard during “open meetings.” You can attend and provide comment.
- 5) All CEC relevant documents will be made available on our website for easy access.

Lava Run
Wind & Solar Projects

MAJOR PERMITTING REQUIREMENTS FOR THE INTERCONNECTION PROJECT

STATE

Arizona Corporation Commission

- Certificate of Environmental Compatibility

Arizona Department of Transportation

- Roadway Encroachment and Crossing Permits

Arizona State Land Department

- Right-of-Way Permitting

LOCAL

Apache County

- Roadway Encroachment and Crossing Permits
- Dust Control Permit
- Other Commercial Permits

OPPORTUNITY FOR COMMENT

Mail

Jeremy Casteel
CG Apache County Wind LLC; CG Apache County Solar LLC
c/o SWCA Environmental Consultants
1750 S. Woodlands Village Boulevard, Suite 200
Flagstaff, AZ 86001

Email

lavarun@swca.com

Project Virtual Open House

lavarunopenhouse.com

Project Website

www.lavarunprojects.com

Voicemail

[928] 222-0084

**Please submit your comment by July 7, 2025,
to ensure it is included in the CEC application.**

Lava Run
Wind & Solar Projects

IF YOU HAVE QUESTIONS OR COMMENTS, PLEASE SPEAK WITH:

GENERAL PROJECT

**Trey Patton
Henry Woltag
Mariana Ambrose
Charlie Banke**

ENVIRONMENTAL

**Lance Olenius
Allison Poe**

ENGINEERING & CONSTRUCTION

**Caldwell Zimmerman
Antonio de las Heras Manovel**

CEC PROCESS

**Colin Agner
Jeremy Casteel**

COUNTY CONDITIONAL USE PERMIT PROCESS

**Jill Grams
Erica Fraley**

**You may be redirected to another representative
depending on your question or concern.**

Lava Run
Wind & Solar Projects